

## Dimethomorph Monitoring Europe 2016



Country	Locations
Netherlands	4
Belgium	2
Germany	2
France	3
UK	4
Denmark	1
Sweden	2
Spain	2
Portugal	2
Greece	2
Samples	24
Total Isolates	153

ADAMA

Source: Batchgeo

October 3, 2017

2

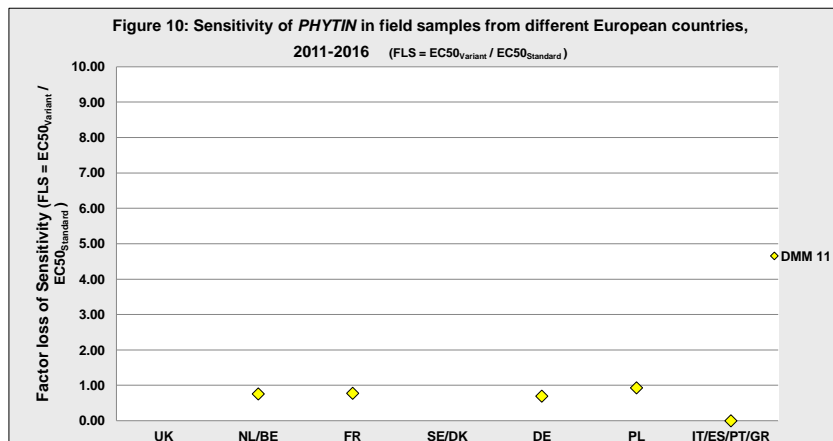
## Sensitivity of PHYTIN in field samples from different regions of Europe towards DMM, 2016

EpiLogic sample-ID	Department / county / next town	n	MEC50	EC50min	EC50max
<b>Ireland</b>					
Ph-AD-021	Carlow	NR			
<b>United Kingdom</b>					
Ph-AD-010	Lancashire	10	3,30	2,47	4,90
Ph-AD-012	Derbyshire	10	3,81	1,73	5,48
Ph-AD-022	Nottinghamshire	10	6,94	5,48	9,32
Ph-AD-024	Lincolnshire	NR			
<b>Netherlands</b>					
Ph-AD-017	Borger-Odoorn	6	3,23	2,47	3,83
Ph-AD-018	Lelystad	6	3,40	2,21	5,48
Ph-AD-020	Doesburg	5	4,59	3,39	5,92
Ph-AD-019	Cuijk	6	5,88	5,16	7,78
<b>Belgium</b>					
Ph-AD-008	Hennegau	4	6,10	3,39	8,86
Ph-AD-009	Hennegau	NR			
<b>France</b>					
Ph-AD-011	Sarthe	10	2,59	1,94	3,57
Ph-AD-007	Somme	NR			
Ph-AD-023	Somme	NR			
<b>Sweden</b>					
Ph-AD-015		10	4,70	2,47	6,96
Ph-AD-014		NR			
<b>Denmark</b>					
Ph-AD-013		10	3,94	2,33	5,92
<b>Germany</b>					
Ph-AD-016	Vechta	7	2,75	1,92	3,83
Ph-AD-006	Viersen	8	3,28	2,33	3,83
<b>Portugal</b>					
Ph-AD-003	Braga	4	3,41	2,70	4,78
Ph-AD-025	Leiria	7	3,18	1,94	5,48
<b>Spain</b>					
Ph-AD-004	Pontevedra	10	3,30	2,85	4,78
Ph-AD-005	Pontevedra	10	3,35	1,73	5,07
<b>Greece</b>					
Ph-AD-001	Elis	10	3,71	2,47	4,90
Ph-AD-002	Elis	10	3,93	1,84	5,92

MEC50: Mean EC50 of the sample (geometric mean); EC50min: Lowest EC50 in the sample; EC50max: highest EC50

October 3, 2017 6

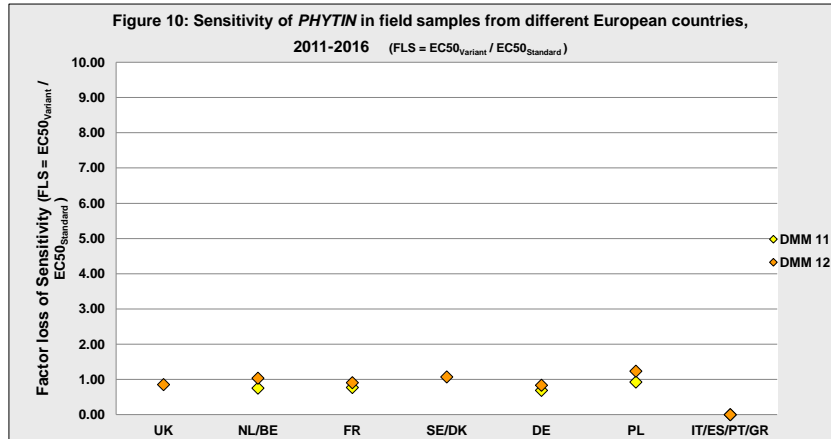
## Sensitivity of PHYTIN to Dimethomorph



ADAMA

October 3, 2017 8

## Sensitivity of PHYTIN to Dimethomorph

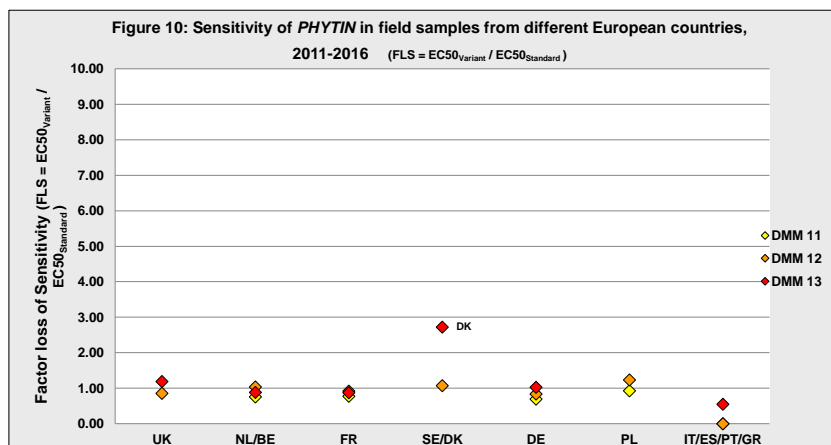


ADAMA

October 3, 2017

9

## Sensitivity of PHYTIN to Dimethomorph

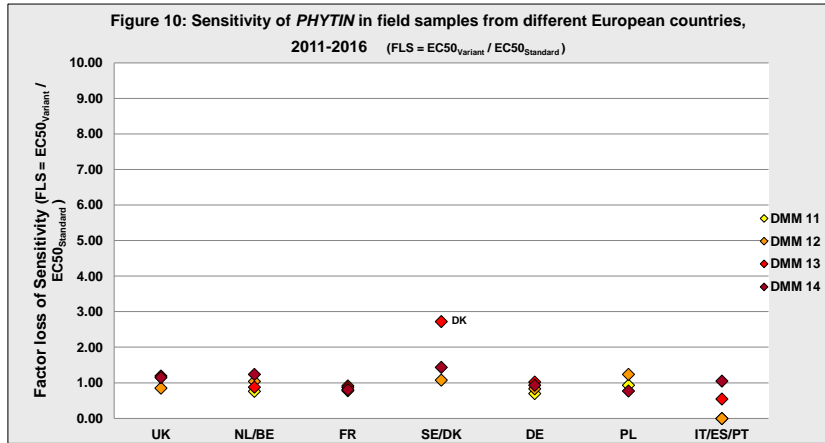


ADAMA

October 3, 2017

10

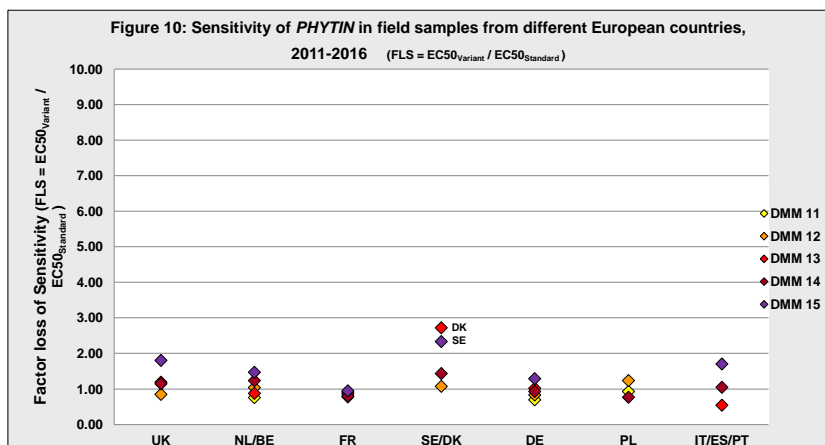
## Sensitivity of PHYTIN to Dimethomorph



ADAMA

October 3, 2017 11

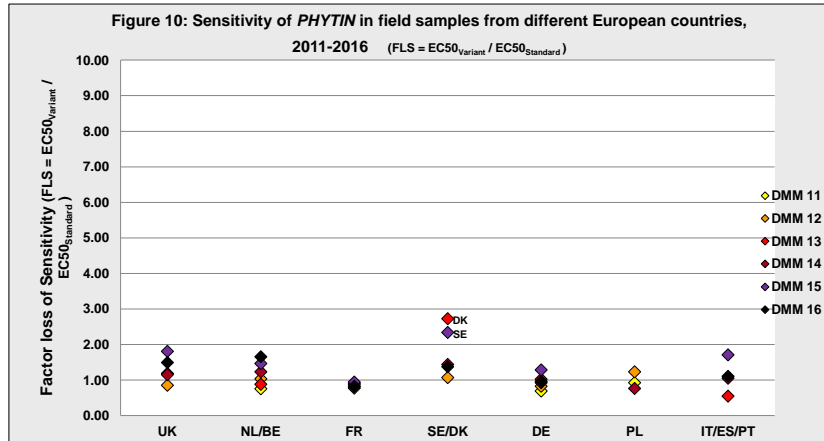
## Sensitivity of PHYTIN to Dimethomorph



ADAMA

October 3, 2017 12

## Sensitivity of PHYTIN to Dimethomorph



ADAMA

October 3, 2017 13

## Dimethomorph Monitoring Europe 2016

### PHYTIN – Summary:

- In total 24 samples were sent to EPILOGIC to be analyzed.
- The highest MEC50 value was calculated from an UK sample with 6,94 mg/l a.i., the highest EC50max with 9,32 mg/l a.i. was found in the same isolate in United Kingdom.
- the EC50 of the sensitive standard is 3,35 mg/l a.i.
- Compared to 2015 data no significant change of EC50 values



In all samples *Phytophthora infestans* showed full sensitivity against Dimethomorph

ADAMA

October 3, 2017 15



ADAMA



**Thank you**  
Olaf van Campen

October 3, 2017