

# Precisiegewasbescherming in de toekomst

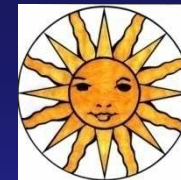


**Agrometeorologisch adviesbureau Erno Bouma**



*Even voorstellen .....*

# Erno Bouma



1987 - 2001

*Voorlichting en onderzoek*

2001 - 2009

*Plantenziektenkundige Dienst*

2009 - ....

*Agrovision*

2004 - ....

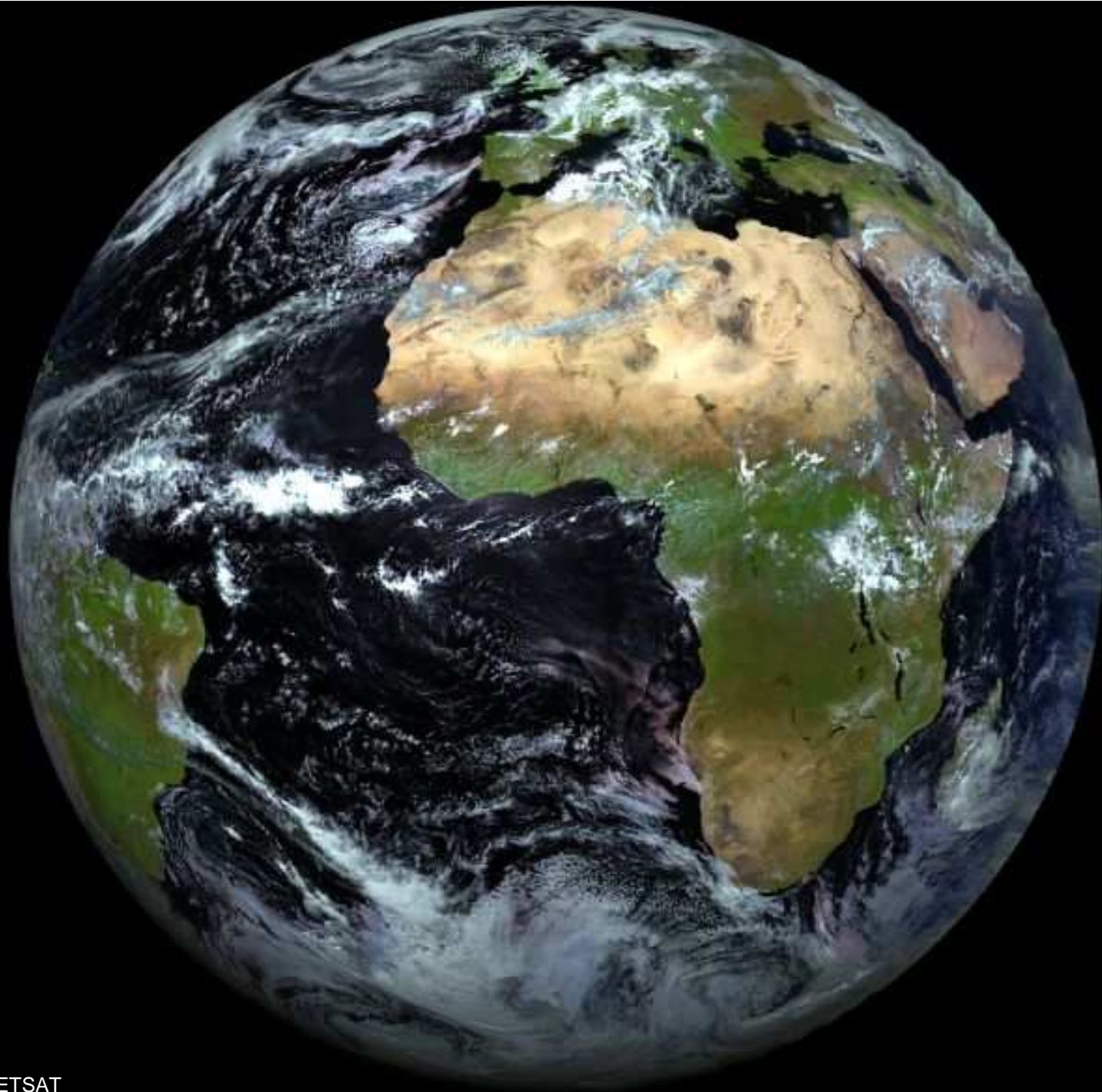
*Agrometeorologisch adviesbureau*

# Hoe precies is mogelijk en nodig?



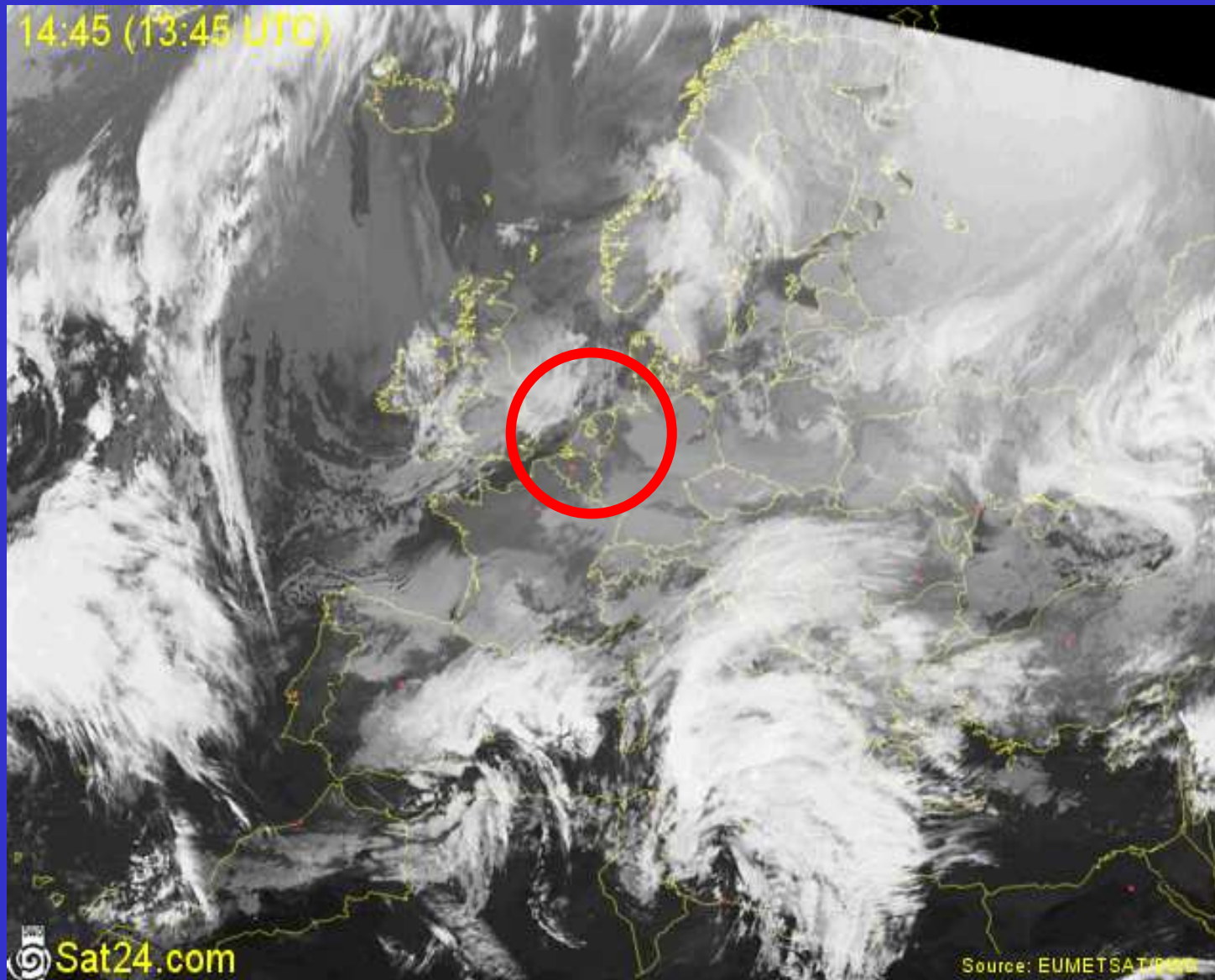


- **Indeling:**
  - Meteorologie
  - Gewasbescherming
  - BOS'sen



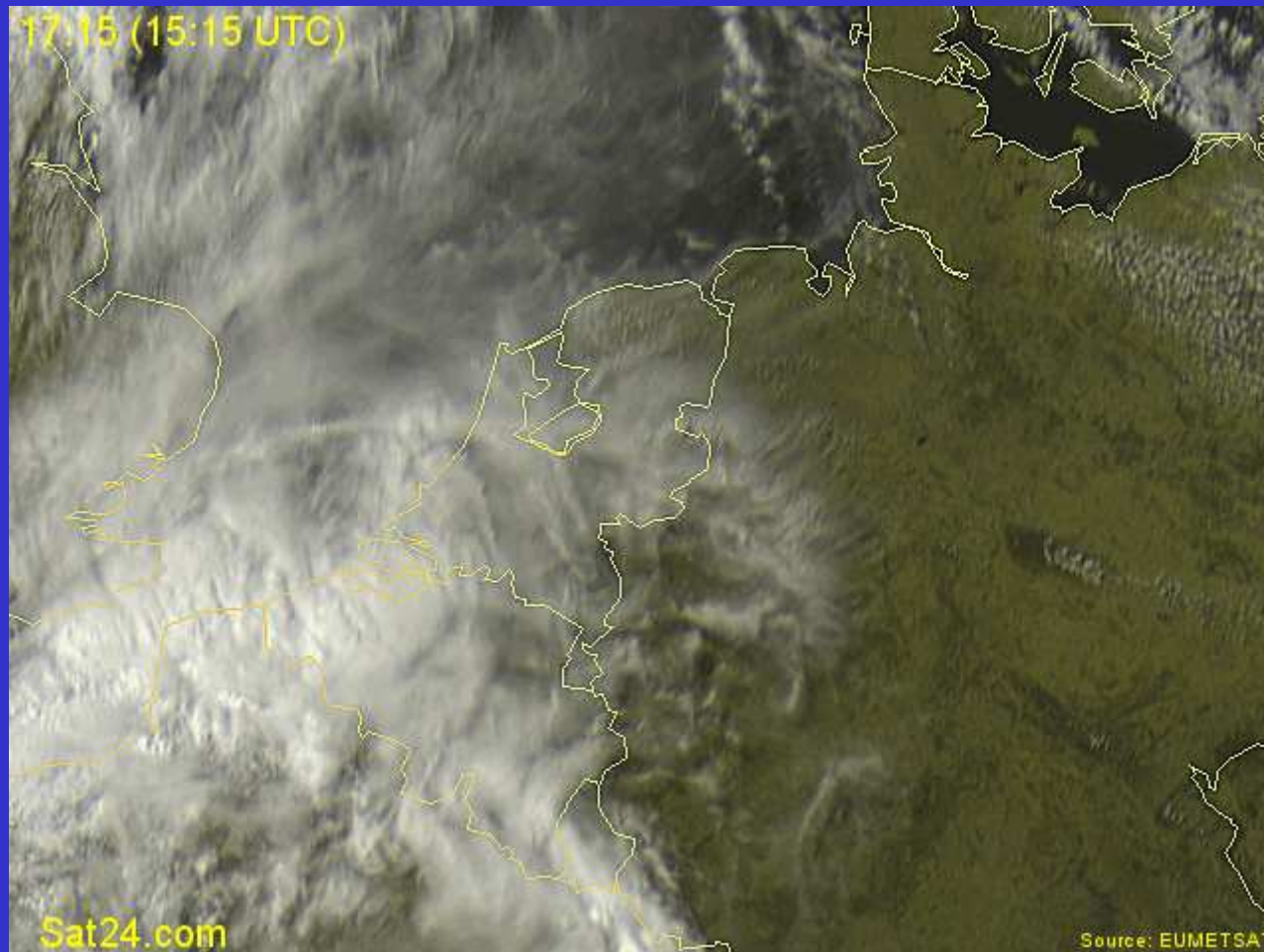
9 mei 2003 EUMETSAT

# KNPV-2009

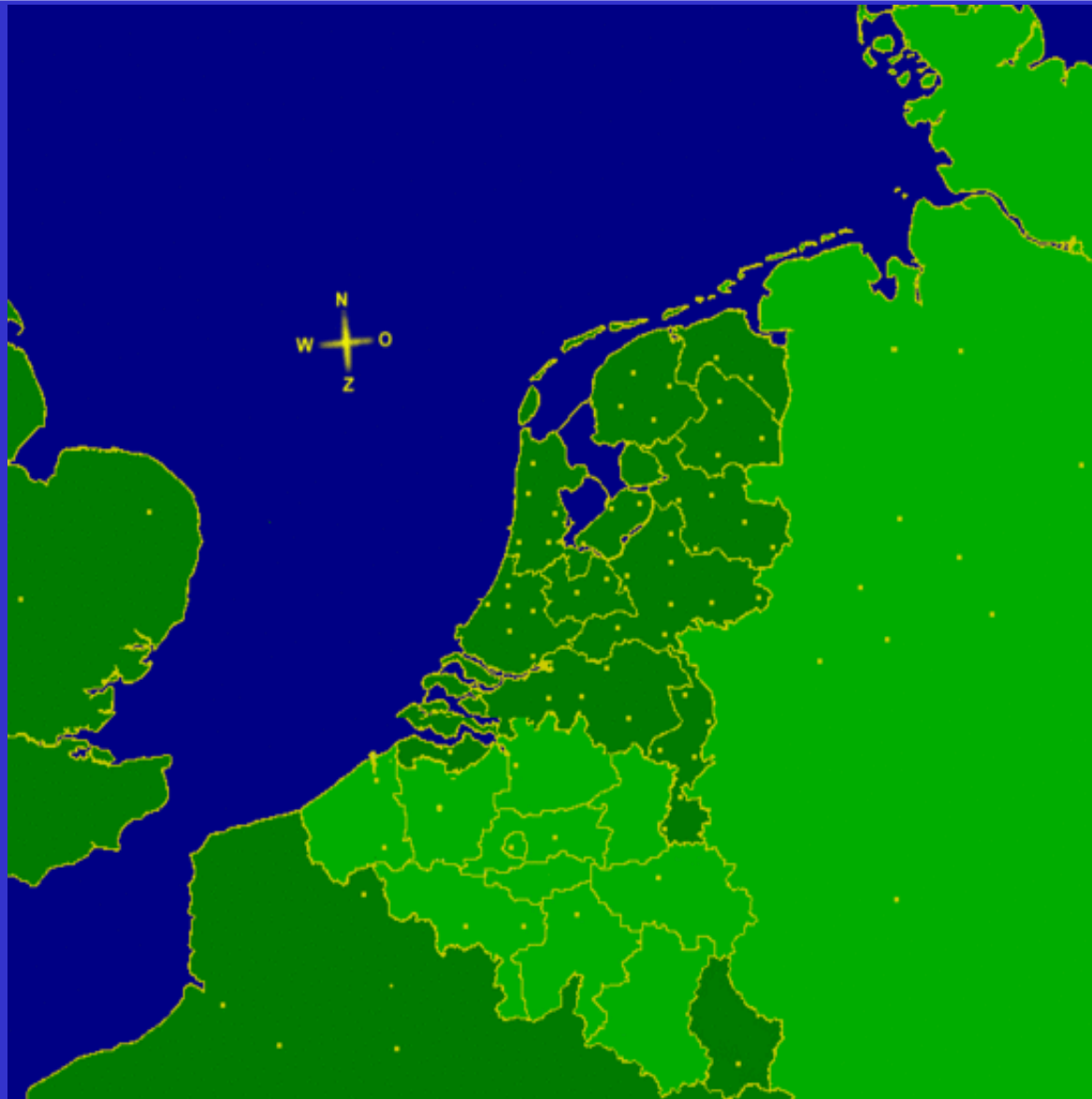


*Precisielandbouw, hoe precies?*

*Erno Bouma*



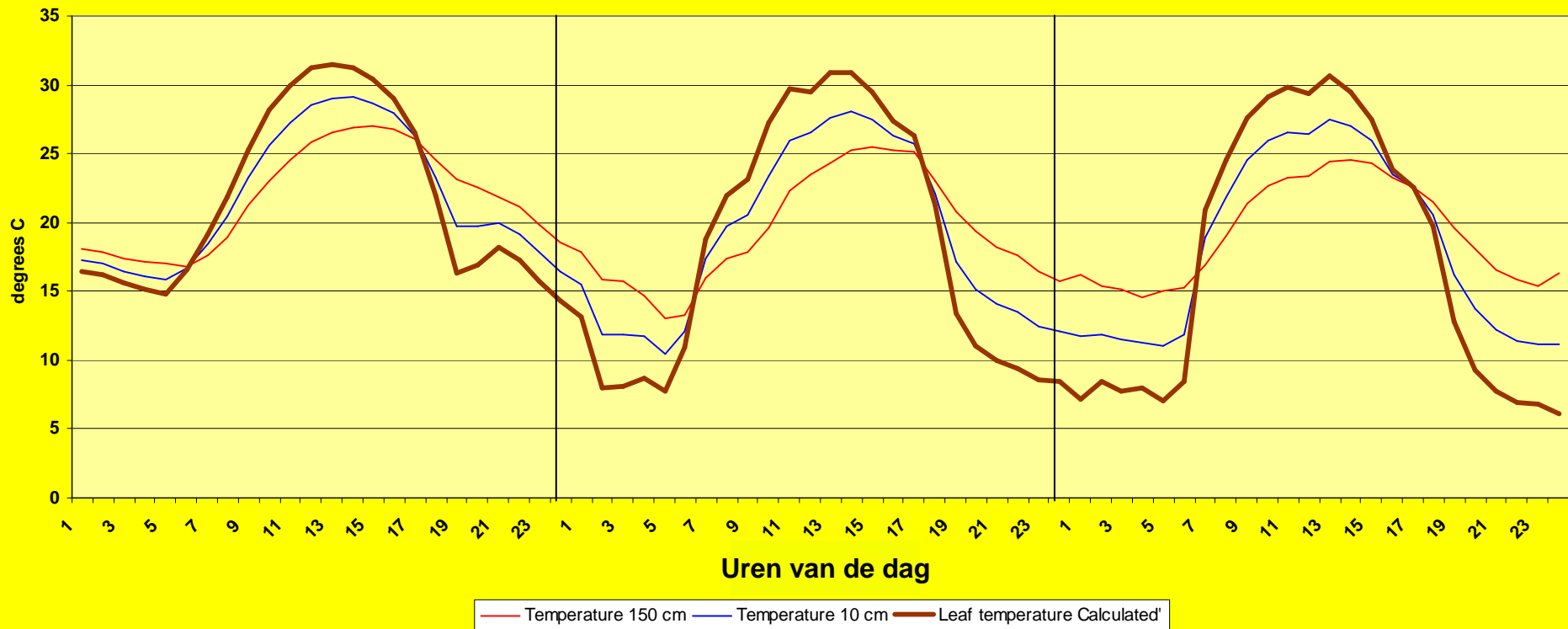


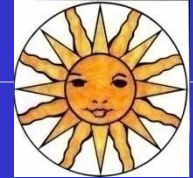


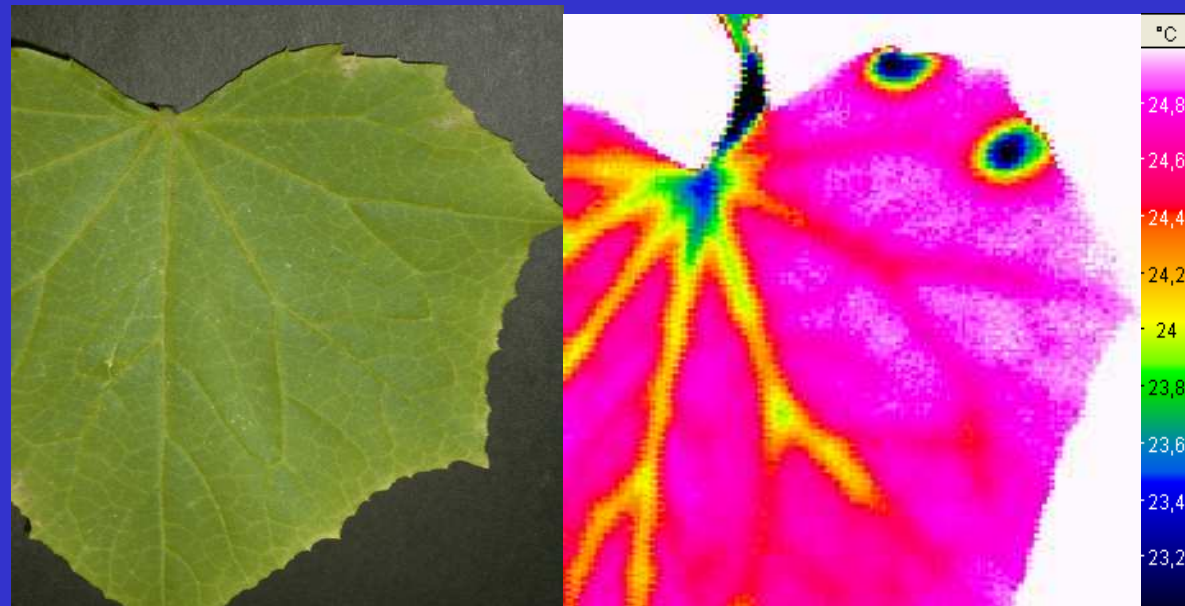




## Verloop van de temperatuur op verschillende hoogtes



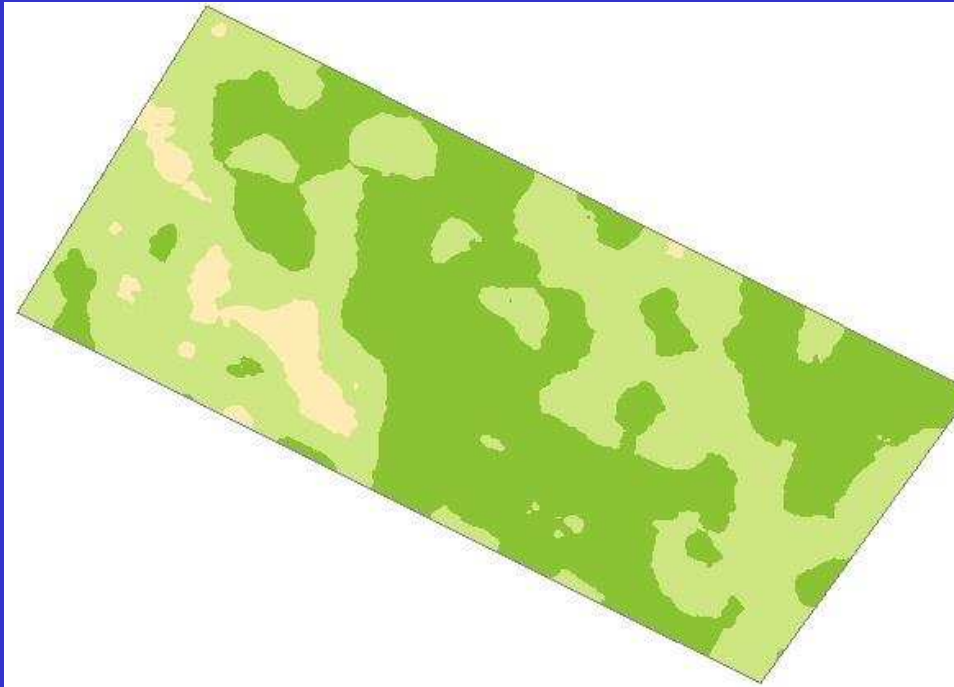




Copyright: Miriam Lindenthal



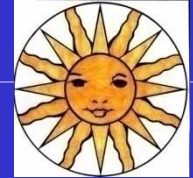
## Verdeling RV in gewas over perceel





Regen,  
“warme”, gelijkmatige waterhoeveelheid?

**KNPV-2009**



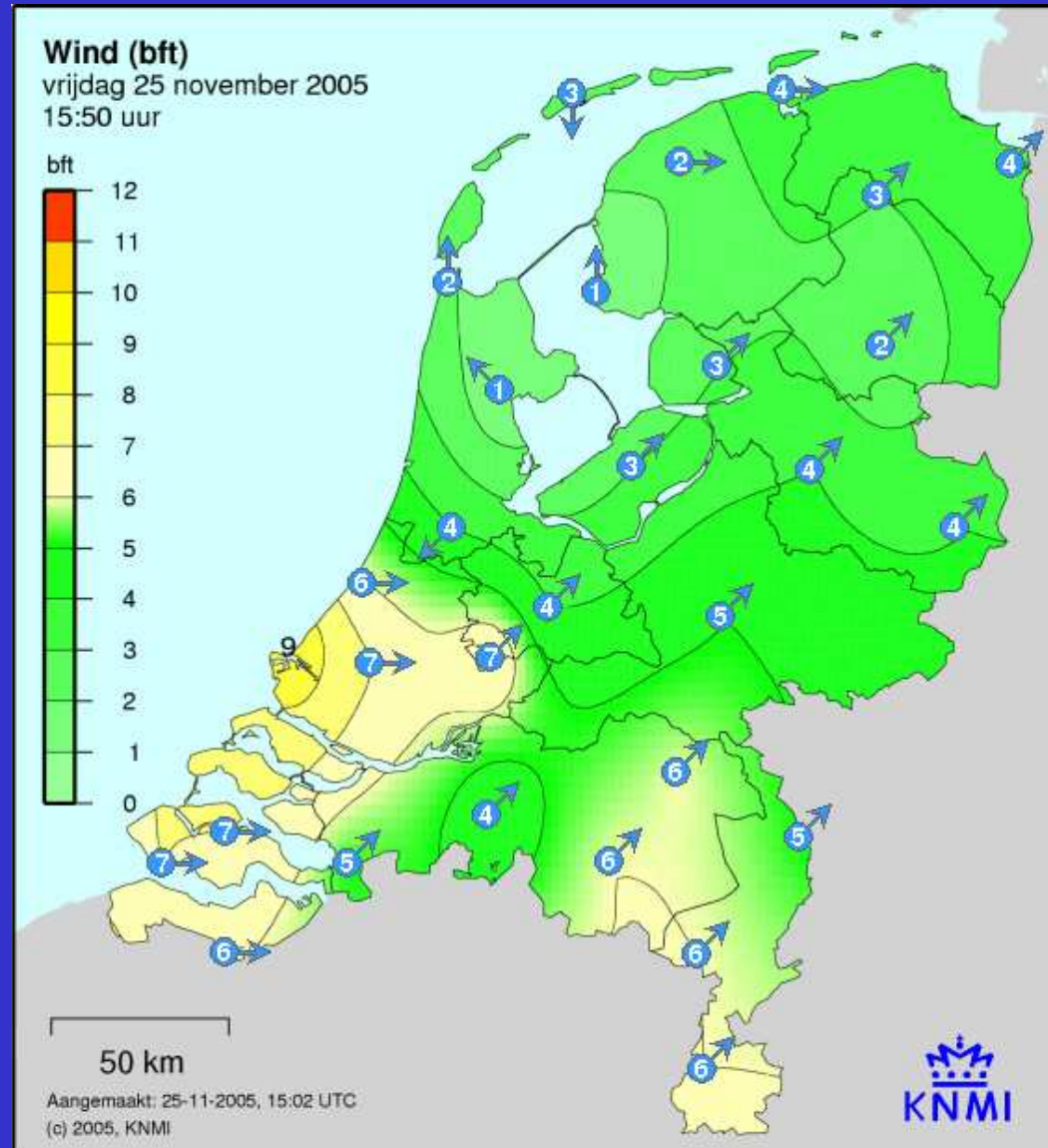
*Precisielandbouw, hoe precies?*

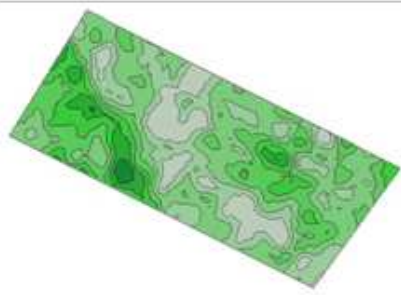
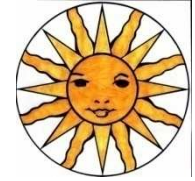
*Erno Bouma*





Wind, homogeen over een perceel?

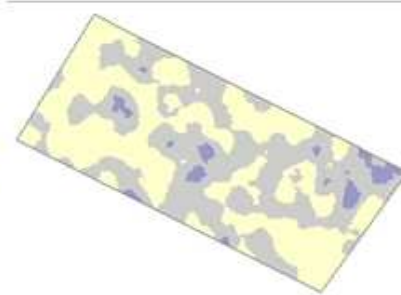




Organische stof



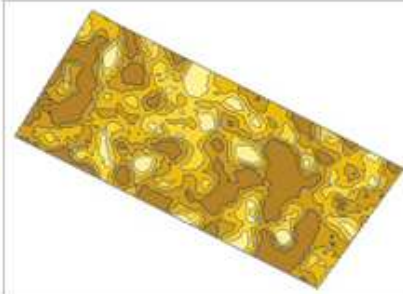
PW-getal (Fosfaat)



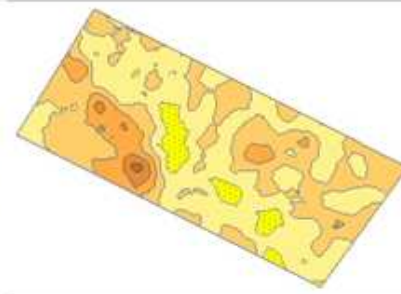
pH (Zuurgraad)



Lutum



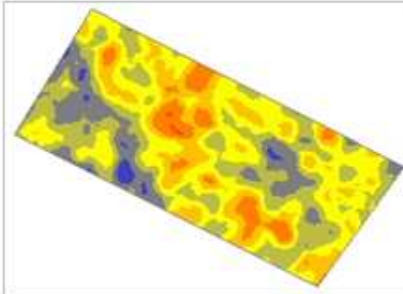
M50-cijfer



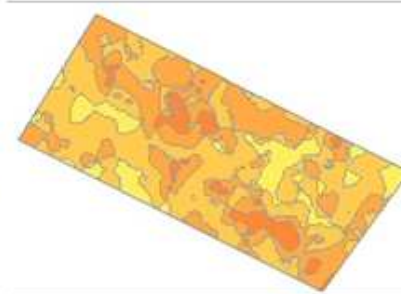
Zandfractie



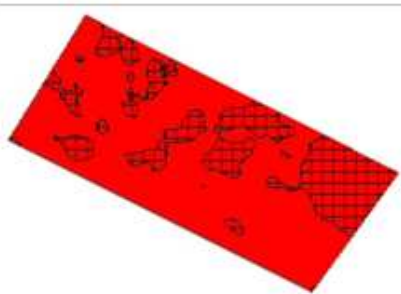
Bulkdichtheid



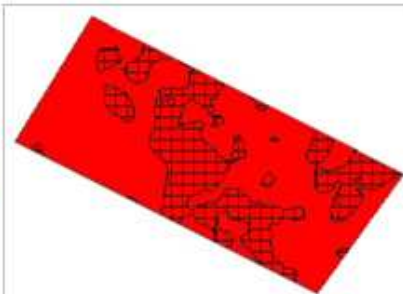
Waterretentie



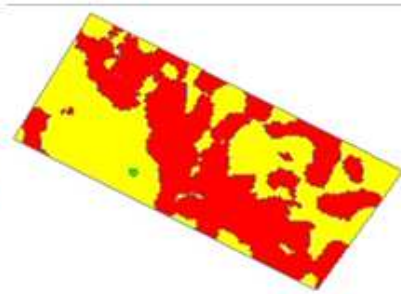
Slempgevoeligheid



Trichodorus risico



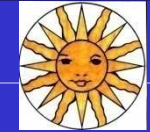
Chitwoodi risico



Stuifgevoeligheid

Andere parameters  
mogelijk ook  
van belang.....

# KNPV-2009



*Precisielandbouw, hoe precies?*

*Erno Bouma*



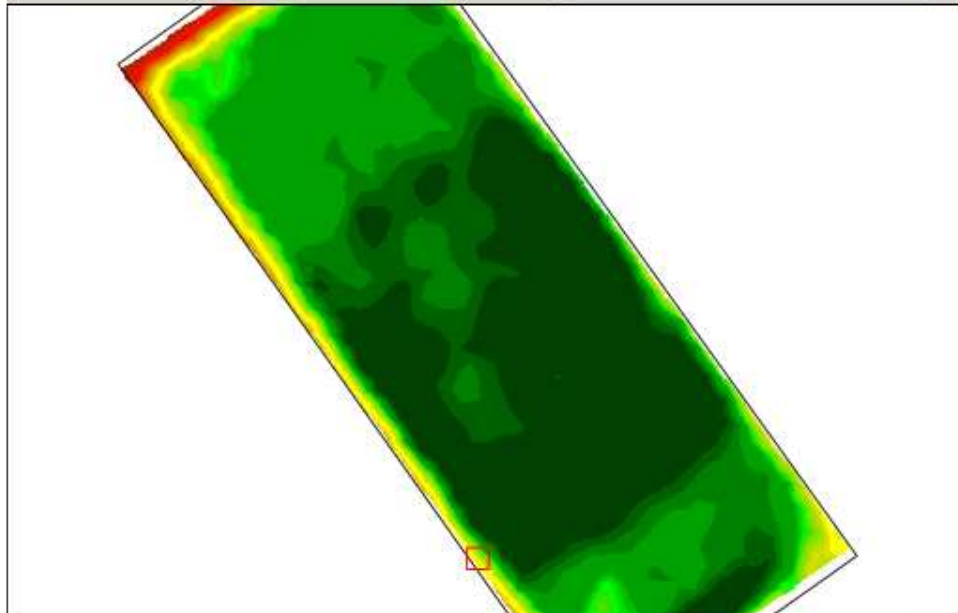
# *Wanneer moet je nou spuiten?*



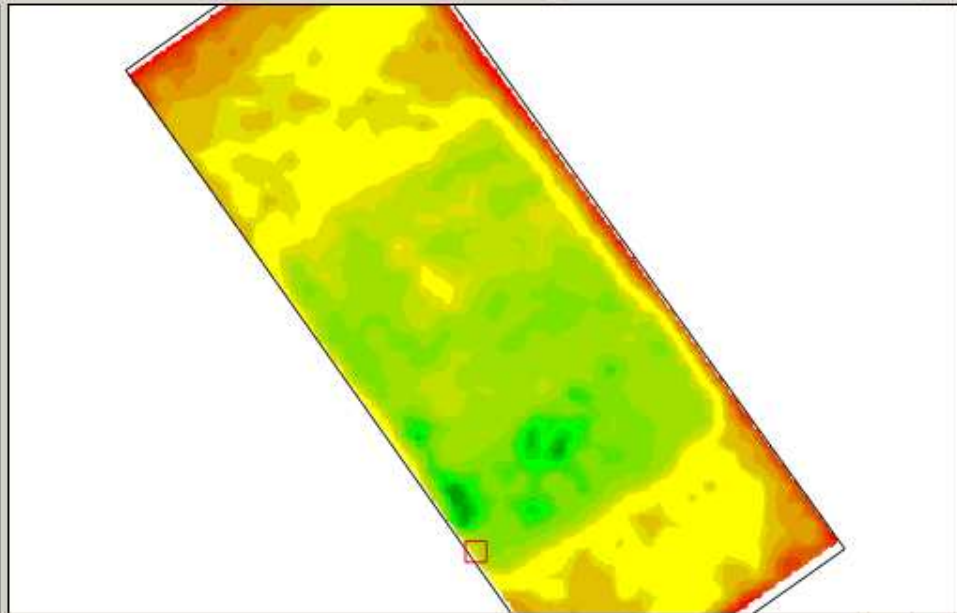
# Kaarten inladen in bedrijfsmanagementsysteem



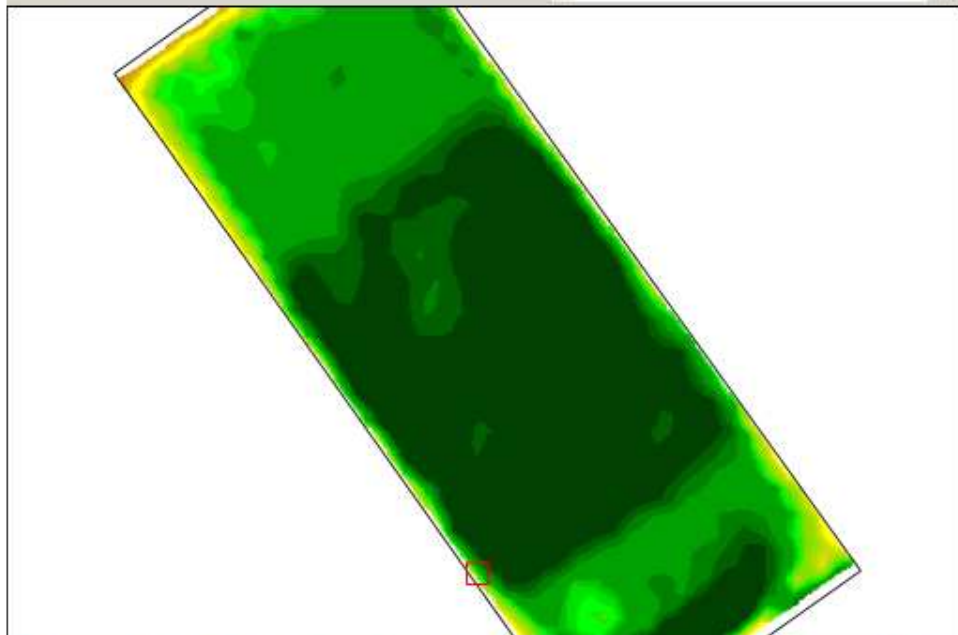
Title Z30-WT - 2007-04-29 - Biomassa M5



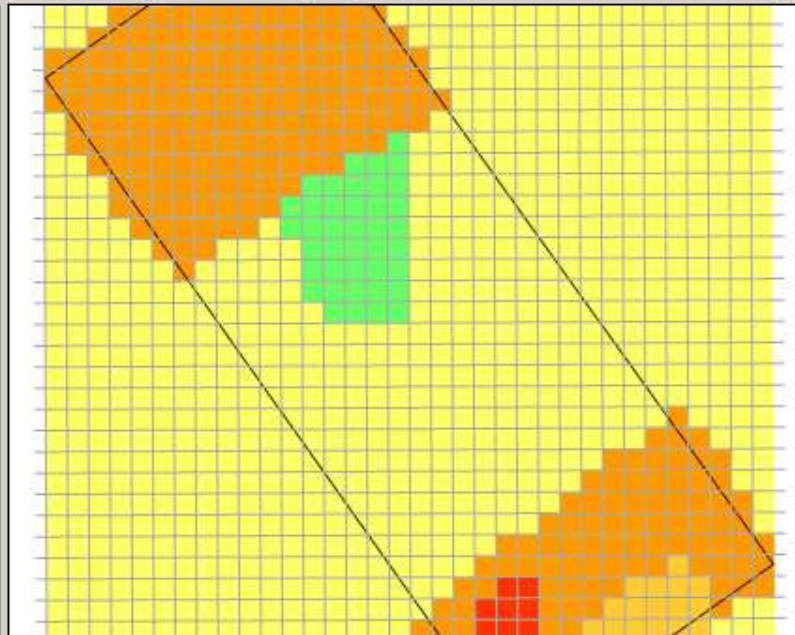
Title Z30-WT - 2007-04-08 - Biomassa M5



Title Z30-WT - 2007-05-23 - Biomassa M5



Gem. 219kg/ha = 4894kg/22,4ha



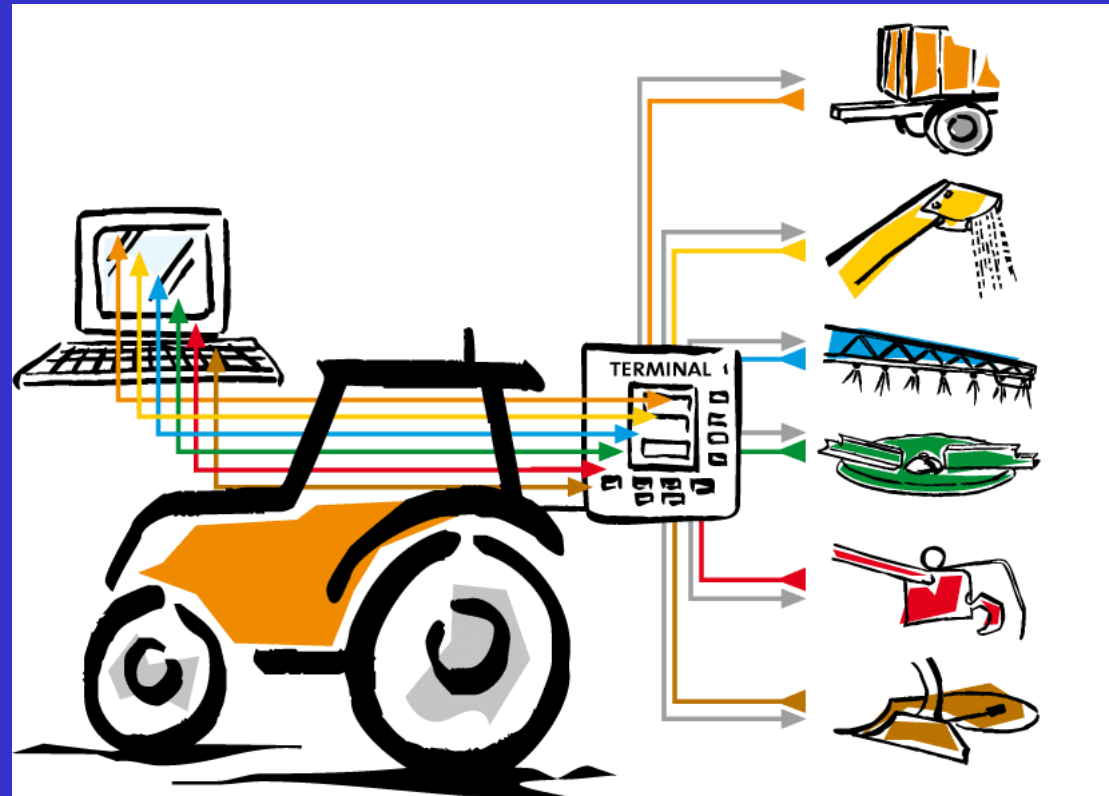
kg/ha	
140	140
160	160
180	180
200	200
220	220
240	240
260	260



## ISOBus

### ISOBus:

- Managementsysteem – Trekker
- Trekker – Werktuig
- Trekker - Managementsysteem





# Specifiek behandelen met de BOS'en en GEWIS





## Toekomst:

- Middelen worden specifiek
- Klimaatsverandering
- Plaatsspecifieke behandeling van ziekten/plagen
- Plaatsspecifieke behandeling van onkruid
- Tijdstip en keuze middel door BOS'en en Gewis

A photograph of an irrigation system over a field of green crops at sunrise. The sun is low on the horizon, creating a warm, golden glow. The irrigation system consists of a long metal pipe with several nozzles that are spraying water, creating a misty atmosphere over the crops. The background shows a line of trees under the bright sky.

**Dank voor de aandacht!**

